

Power supply terminal (low profile type)

NQ series

- This is used for supplying power to a PC board.
- Please fit a crimping terminal at the edge of electric wire and tighten with a screw.
- Material: Copper
- Finish: Tin plating over nickel base

■ **Part No.**

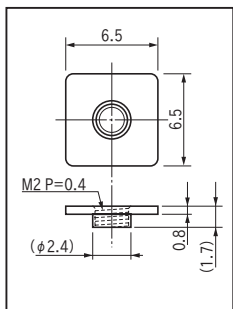
| Part No. | Adsorption film | Package | Rated current | Tightening torque |
|----------|-----------------|--------------------|---------------|----------------------------------|
| NQ-2 | None | Bulk (100pcs/pack) | 20A | 2kgf-cm (19.6N-cm) or less |
| NQ-2-T | None | Reel (450pcs/reel) | | |
| NQ-2-T-A | Include | Reel (450pcs/reel) | 30A | 5kgf-cm (49N-cm) or less |
| NQ-3 | None | Bulk (100pcs/pack) | | |
| NQ-3-T | None | Reel (400pcs/reel) | | |
| NQ-3-T-A | Include | Reel (400pcs/reel) | | |

※ Please remove the adsorption film after mounting.

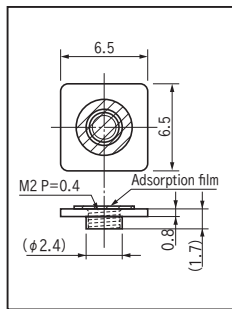
■ **Recommended metal mask thickness**

150 μm to 200 μm

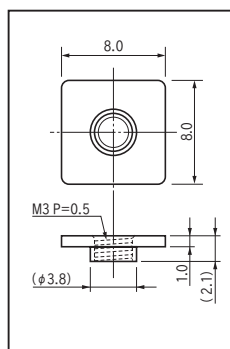
■ **Dimension**



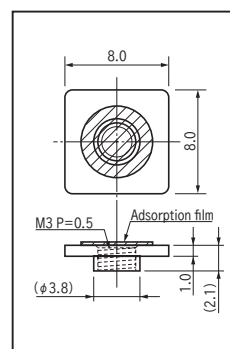
NQ-2, NQ-2-T



NQ-2-T-A

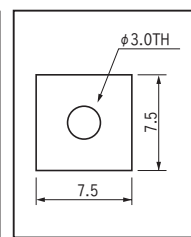


NQ-3, NQ-3-T

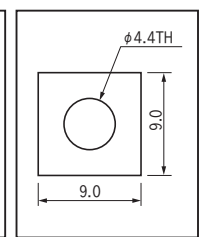


NQ-3-T-A

■ **Recommended land information**

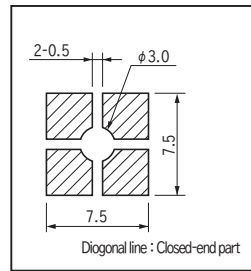


NQ-2

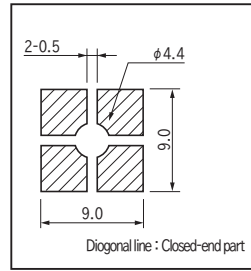


NQ-3

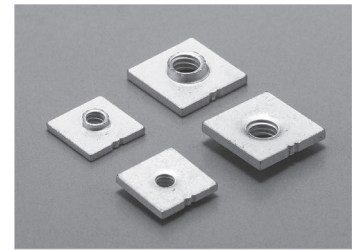
■ **Recommend metal mask**



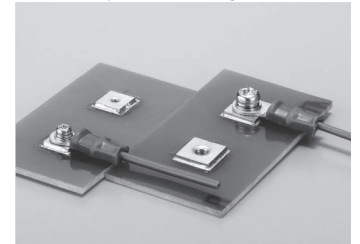
NQ-2



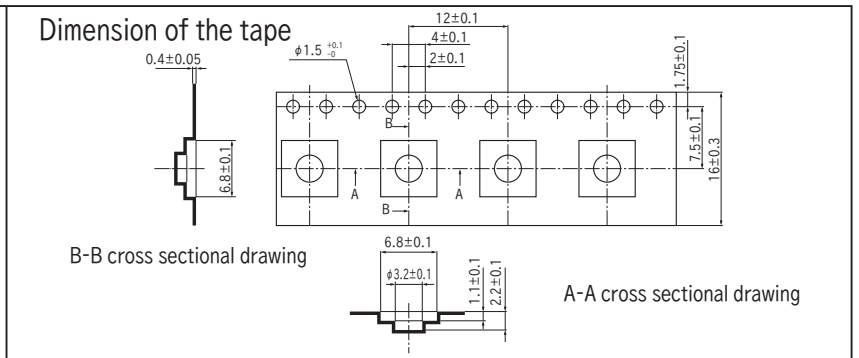
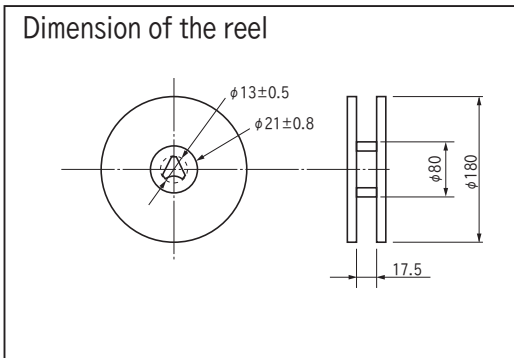
NQ-3



■ **Example of usage**



■ **NQ-2-T, NQ-2-T-A Dimension**



■ **NQ-3-T, NQ-3-T-A Dimension**

