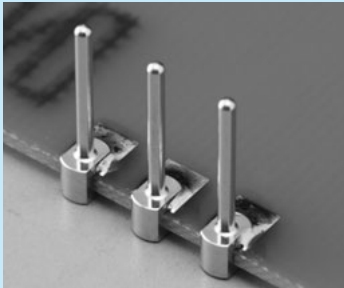


Side fitting pin [SK series] (100pcs/pack)

- This terminal allows vertical fitting of a pin by inserting from the side of a PC board.
- After inserting, solder the pin to the land to fix it.
- The adaptive PC board thickness is 1.0t and 1.6t.
- Material: Brass
- Finish: Gold plating over nickel base
- Rated current: 7A



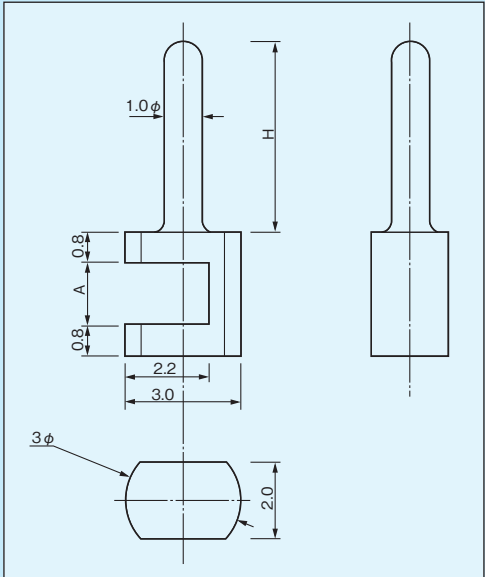
Example of usage



Part number

Part number	A	H	Adaptive PC board thickness
SK-10-5-1.0	1.10	5	1.0t
8-1.0	∕	8	1.0t
10-1.0	∕	10	1.0t
SK-10-5-1.6	1.70	5	1.6t
8-1.6	∕	8	1.6t
10-1.6	∕	10	1.6t

Dimension



Recommended land for fitting

