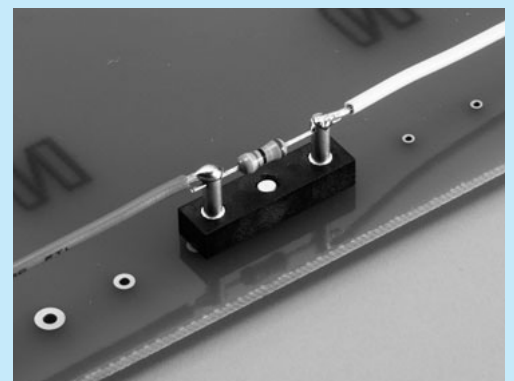
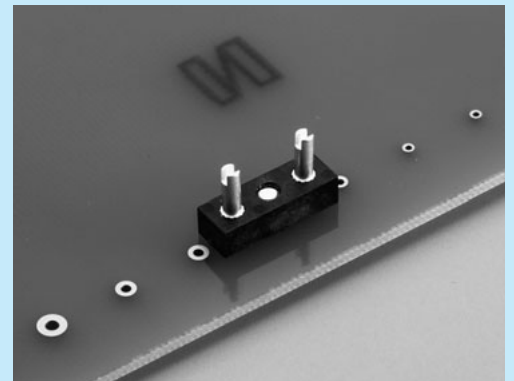


Terminal for additional part [QB series] (10pcs/pack)

- This is used when an additional part is required on a PC board.
 - Please insert in the upper and lower electric conduction through hole ($\phi 0.8$) of the PC board and solder this product to fix.
 - Please put an electronic part such as resistor and capacitor on the slit of the upper part and solder it to fix.
 - Please solder the electric wire to the leg of the electronic part (in the slit) to connect to the specified place.
 - Material Resin part: PPS black (UL94V-0)
Metal part: Brass
 - Finish: Tin plating over nickel base
 - Withstand voltage: 1000 VAC, DC per minute
 - Operating temperature range: -40 to $+125^{\circ}\text{C}$
 - Mountable through hole: $\phi 0.8$ or over
 - Mountable lead diameter: $\phi 1.1$ or less
- * The pin of $\phi 0.7$ is insulated against the left and right slit pins.

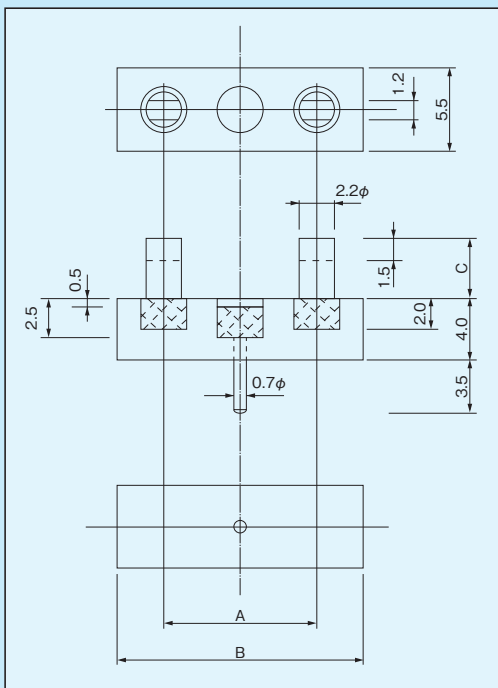


■ Example of usage



■ Part number

Part number	A	B	C
QB-10-4	10	16	4
QB-10-6	10	16	6
QB-15-4	15	21	4
QB-15-6	15	21	6



For additional part