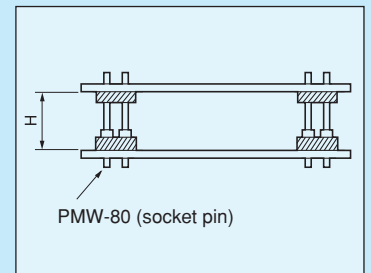
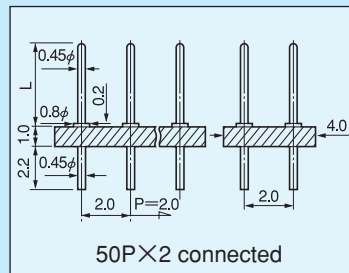


**Super-small terminal for two-tiered installation (two-row type) [MXW-20 series] (Pitch: 2.0 mm) (10pcs/pack)**

- This is used for mounting PC boards by two-tiered installation.
- This terminal is of two-row type with a pitch of 2.0 mm.
- Material  
Resin part: PPS resin black (UL94V-0),  
Pin: Phosphor bronze, Finish: Gold plating over nickel base
- Rated current: 2A
- Insulation resistance: 500MΩ or over
- Withstand voltage: 1000V AC, DC per minute
- Operating temperature range: -40 to +125°C
- Printed board fitting hole diameter: φ 0.6
- Adaptive socket: PMW-80



\* The dimension H indicates the distance between the boards when combining MXW-20 series with PMW-80

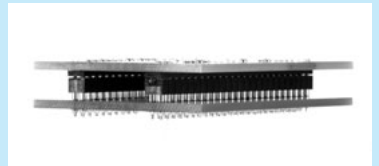
Part number	L	Number of pins connected	H	Adaptive socket pin
MXW-20-0	3.0	50×2		
MXW-20-1	3.7	50×2	5.4	PMW-80
MXW-20-2	4.4	50×2	6.1	∕
MXW-20-3	4.9	50×2	6.6	∕
MXW-20-4	5.4	50×2	7.1	∕

**How to order:**

MXW-20-1-10PW

Please fill in the number of poles on one side. (Maximum number: 50PW)  
(If the number is not specified, we will deliver the part of the maximum number of connection.)

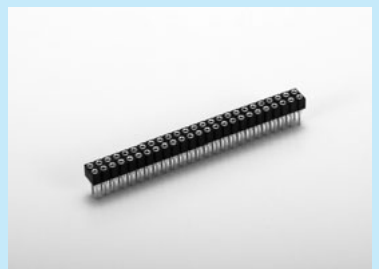
**Example of usage**



Combination of MXW-20 series with the PMW-80

**Socket pin [Part number: PMW-80] (Pitch: 2.0 mm) (10pcs/pack)**

- By combining with MXW-20 series, PC boards can be mounted by two-tiered installation.
- This terminal is of two-row type with a pitch of 2.0 mm.
- Material  
Resin part: PPS resin black (UL94V-0),  
Pin part Body: Brass: Gold plating over nickel base  
Contact part Beryllium copper: Gold plating over nickel base
- Operating temperature range: -40 to +125°C
- Rated current: 1A
- Insulation resistance: 500MΩ or over
- Withstand voltage: 1000V AC, DC per minute
- Insertion / removal frequency: 100 times or over
- Contact resistance: 10mΩ or less
- Insertion / removal forces: 30g or over (per pin)
- Adaptive male pin diameter: φ 0.40 to φ 0.54
- Printed board fitting hole diameter: φ 0.7 to φ 0.8

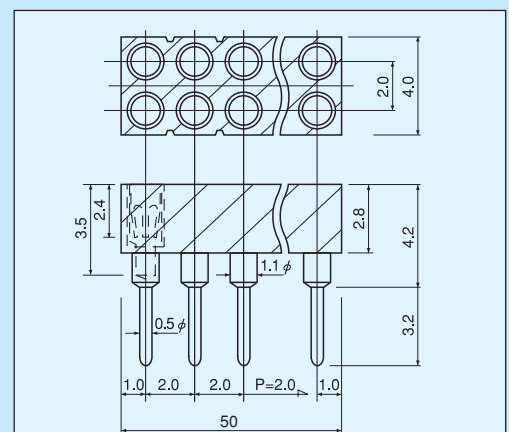


**Part number: PMW-80**

**How to order:**

PMW-80-10PW

Please fill in the number of poles on one side. (Maximum number: 25PW)  
(If the number is not specified, we will deliver the part of the maximum number of connection.)



Part number: PMW-80, 25P×2 connected

For two-tiered installation