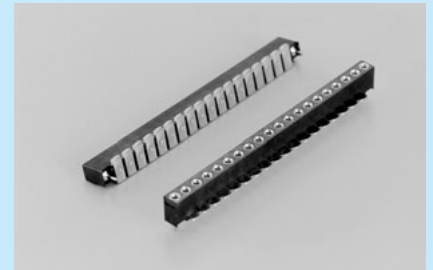
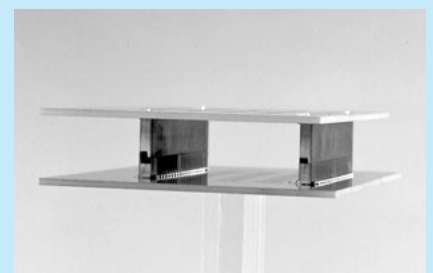
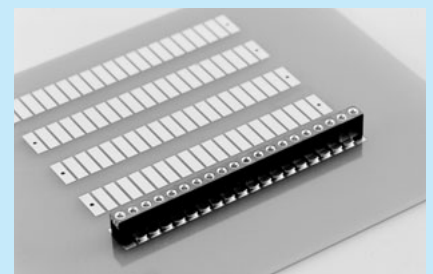


**Socket for two-tiered installation for surface mounting (strong type) [PES-2] (10pcs/pack)**

- By combining this with OVS series described in the previous page, printed boards can be inserted or removed in the two-tiered state.
- In the same manner as the socket for face mounting, the positioning sockets can be used electrically.
- Pitch: 2.54 mm, Max. 20P connected
- Material Resin part: PPS black (UL94V-0)  
 Socket part Body: Brass  
 Contact: Beryllium copper
- Finish Body: Gold plating over nickel base  
 Contact: Gold plating over nickel base
- Rated current: 3A
- Insulation resistance: 500MΩ or over
- Withstand voltage: 1000V AC, DC per minute
- Contact resistance: 10mΩ or less
- Insertion / removal frequency: 100 times or over
- Insertion / removal forces: 70g or over (per pin)
- Adaptive male pin diameter: φ 0.6 to φ 0.8
- Operating temperature range: -40 to +125°C



**Example of usage**

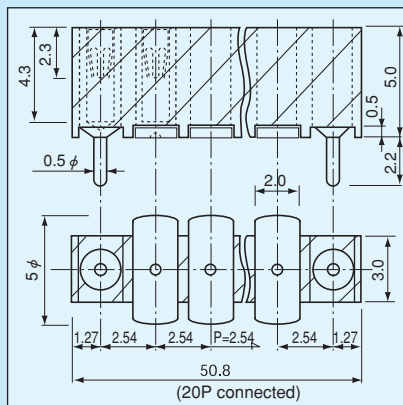


When PES-2 and OVS series are combined



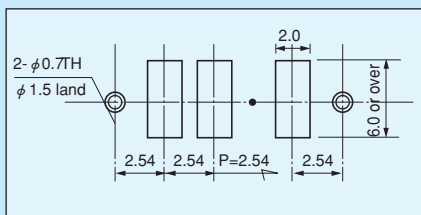
When PES-2 and OW series are combined

**Dimension**



**Part number: PES-2**

**Recommended land diameter**



**How to order**

PES-2-10P



Please fill in the desired number of poles.  
 (Please fill in the number of poles including the positioning sockets.)  
 (Maximum number: 20 P)  
 (With 8P as the face mounting socket and 2P as the positioning socket)

\* We can manufacture the product without positioning pins. (Please contact us.)

**Instructions for mounting**

In the case that a warpage occurs on the resin part during reflow because many pins are connected for use, apply an adhesive to several positions.