

Vertical type connection socket for surface mounting (with position) [Part number: PES-1] (10pcs/pack)

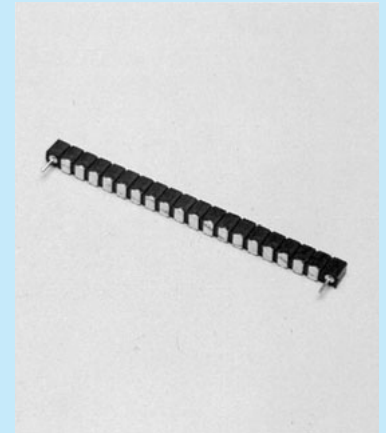
- This is the type with positioning sockets for the both sides of PEM-1.
- The specification is the same as PEM-1.
- In the same manner as the face mounting socket, the positioning socket can be electrically used.

How to order

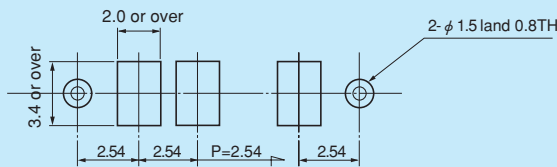
PES-1-10P



Please fill in the desired number of poles.
 (Please fill in the number of poles including the positioning sockets.)
 (With 8P as the face mounting socket and 2P as the positioning socket)
 (Maximum number: 20 P)

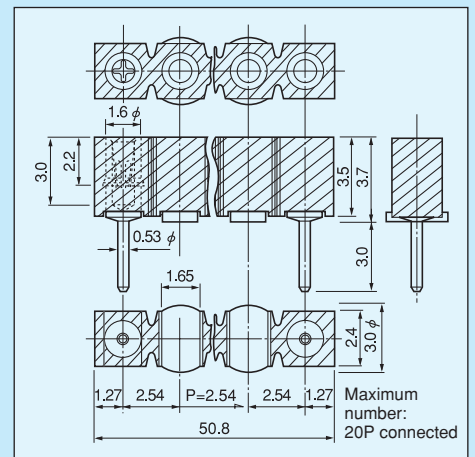


Recommended land diameter



Instructions for mounting

- In the case that a warpage occurs on the resin part during reflow because many pins are connected for use, apply an adhesive to several positions and fix.



Socket pin for surface mounting [Part number: PE-1] (100pcs/pack)

- This socket can be fit to a surface mounting board.
- Adaptive male pin is OP-1-2, OP-2-2 and OJ-2.
- Material
 - Body Brass: Tin plating over nickel base
 - Contact part Beryllium copper: Gold plating over nickel base
- Specification
 - Rated current: 1A
 - Contact resistance: 10mΩ or less
 - Insertion / removal frequency: 100 times or over
 - Insertion / removal forces: 70g or over
 - Adaptive male pin diameter: φ 0.45 to φ 0.6
 - Operating temperature range: -40 to +125°C

Part number:PE-1

