

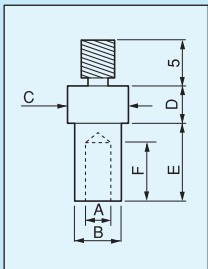
## Tool for press-fitting

### Main unit [Part number: PCX-1] (1pc/pack)

- Use the tool by attaching the chip at the edge of the main unit.

### Edge chip [P series] (1pc/pack)

- It is impossible to use the tool without attaching it to the main unit (PCX-1).



Part number	A( $\phi$ )	B( $\phi$ )	C( $\phi$ )	D	E	F
P- 1	0.6	3	4	8	12	5
P- 2	0.9	3	4	8	12	11
P- 3	1.1	3	4	8	12	11
P- 4	1.4	4	4	0	20	16
P- 5	2.0	4	4	0	20	11
P- 6	2.2	4	4	0	20	5
P- 7	2.6	4	4	0	20	16
P- 8	3.5	6	6	0	20	11
P- 9	4.5	8	8	0	20	5
P-10	6.5	10	10	0	20	5
P-11	1.0	3	4	11	9	7.2
P-12	1.0	3	4	9	11	9.2
P-13	1.0	3	4	5	15	13.2
P-14	0.8	2.5	4	12	8	6.2
P-15	0.8	2.5	4	9	11	9.2
P-16	0.7	2.0	4	5	15	16
P-21	0.6	2.5	4	8	12	11
P-22	0.9	2.5	4	8	17	21
P-23	1.1	2.5	4	8	17	21
P-24	0.6	1.5	4	8	12	12



PCX-1



P series

- The appropriate terminal is respectively described on each terminal.

### Set product [Part number: PCX-1-SET] (1set/pack)

- This is a set product including 1 piece of main unit and all types of chips (each one piece).

## Tool for crimping

### Punch set [Part number: PON-SET] (1set/pack)

- The punch set to be used for crimping the crimping terminal on the printed board is included.



PON-1, PON-2, PON-3



PON-4