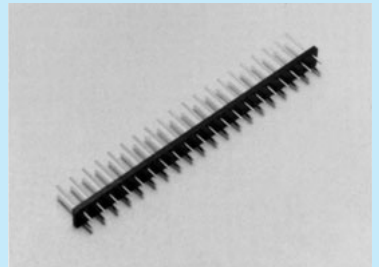
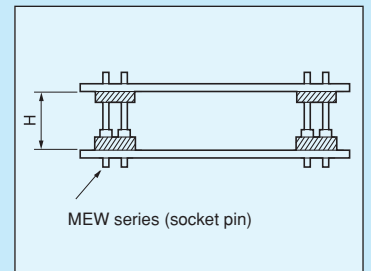
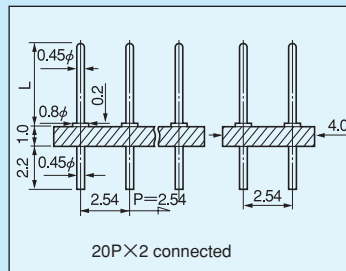


Super-small terminal for two-tiered installation (two-row type) [MXW-3 series] (Pitch: 2.54 mm) (10pcs/pack)

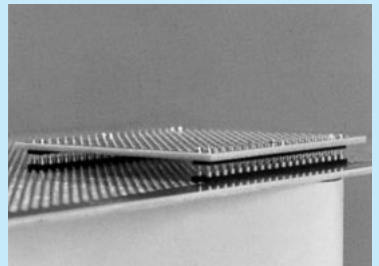
- This is used for mounting PC boards by two-tiered installation.
- This terminal is of two-row type with a pitch of 2.54mm.
- Material
Resin part: PCT resin black (UL94V-0),
Pin: Phosphor bronze, Finish: Gold plating over nickel base
- Rated current: 2A
- Insulation resistance: 500MΩ or over
- Withstand voltage: 1000V AC, DC per minute
- Operating temperature range: -40 to +125°C
- Printed board fitting hole diameter: φ 0.6
- Adaptive socket: MEW-3 series



| Part number | L | Number of pins connected | H | Adaptive socket pin |
|-------------|-----|--------------------------|-----|---------------------|
| MXW-3-0 | 3.0 | 20×2 | | |
| MXW-3-1 | 3.7 | 20×2 | 3.7 | MEW-3-1 |
| MXW-3-2 | 4.4 | 20×2 | 4.0 | ∕ |
| MXW-3-3 | 4.9 | 20×2 | 4.5 | ∕ |
| MXW-3-4 | 5.4 | 20×2 | 5.0 | ∕ |



* The dimension H indicates the distance between the boards when combining MXW-3 series with MEW-3-1



How to order:

MXW-3-1-10PW

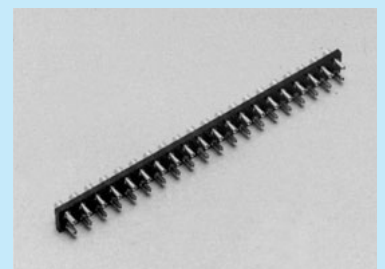


Please fill in the number of poles on one side. (Maximum number: 20PW)
(If the number is not specified, we will deliver the part of the maximum number of connection.)

For two-tiered installation

Socket pin with super-low back [Part number: MEW-3-1] (Pitch: 2.54 mm) (10pcs/pack)

- By combining this with MXW-3 series, PC boards can be mounted by two-tiered installation.
- This terminal is of two-row type with a pitch of 2.54mm.
- Material
Resin part: PCT resin black (UL94V-0),
Pin part Body: Brass: Tin plating over nickel base
Contact part Beryllium copper: Gold plating over nickel base
- Operating temperature range: -40 to +125°C • Rated current: 1A
- Insulation resistance: 500MΩ or over • Withstand voltage: 1000V AC, DC per minute
- Insertion / removal frequency: 100 times or over • Contact resistance: 10mΩ or less
- Insertion / removal forces: 30g or over (per pin)
- Adaptive male pin diameter: φ 0.35 to φ 0.47
- Printed board fitting hole diameter: φ 0.9 to φ 1.0



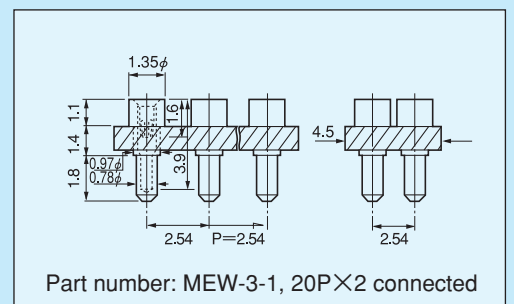
Part number: MEW-3-1

How to order:

MEW-3-1-10PW



Please fill in the number of poles on one side. (Maximum number: 20PW)
(If the number is not specified, we will deliver the part of the maximum number of connection.)



Part number: MEW-3-1, 20P×2 connected