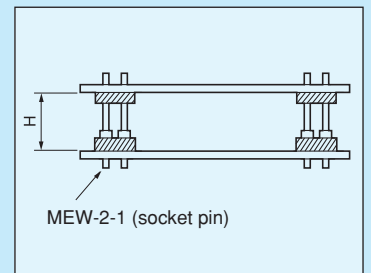
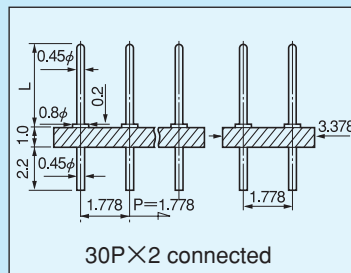
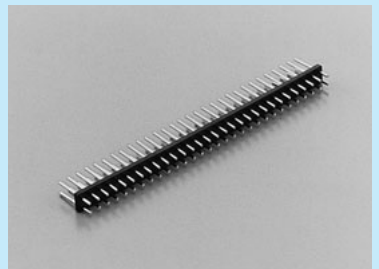


Super-small terminal for two-tiered installation (two-row type) [MXW-2 series] (Pitch: 1.778 mm) (10pcs/pack)

- This is used for mounting PC boards by two-tiered installation.
- This terminal is of two-row type with a pitch of 1.778mm.
- Material
Resin part: PPS resin black (UL94V-0),
Pin part: Phosphor bronze, Finish: Gold plating over nickel base
- Rated current: 2A
- Insulation resistance:500MΩ or over
- Withstand voltage: 1000V AC, DC per minute
- Operating temperature range:—40 to +125°C
- Printed board fitting hole diameter: φ 0.6
- Adaptive socket: MEW-2 series



* The dimension H indicates the distance between the boards when combining MXW-2 series with MEW-2-1

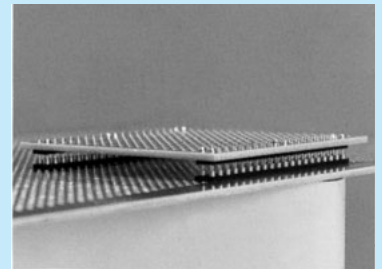
Part number	L	Number of pins connected	H	Adaptive socket pin
MXW-2-0	3.0	30×2		
MXW-2-1	3.7	30×2	3.5	MEW-2-1
MXW-2-2	4.4	30×2	4.0	∕
MXW-2-3	4.9	30×2	4.5	∕
MXW-2-4	5.4	30×2	5.0	∕

How to order:

MXW-2-1-10PW

↑ Please fill in the number of poles on one side.(Maximum number: 30PW)
(If the number is not specified, we will deliver the part of the maximum number of connection.)

Example of usage

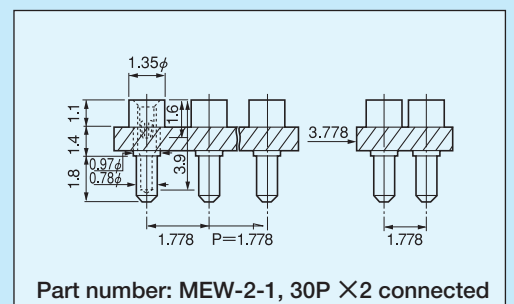


Combination of MXW-2 series with MEW-2-1

For two-tiered installation

Socket pin with super-low back [Part number: MEW-2-1] (Pitch: 1.778 mm) (10pcs/pack)

- By combining this with MXW-2 series, PC boards can be mounted by two-tiered installation.
- This terminal is of two-row type with a pitch of 1.778 mm.
- Material
Resin part: PPS resin black (UL94V-0),
Pin part Body: Brass: Tin plating over nickel base
Contact part Beryllium copper: Gold plating over nickel base
- Operating temperature range:—40 to +125°C • Rated current: 1A
- Insulation resistance:500MΩ or over • Withstand voltage: 700V AC, DC per minute
- Insertion / removal frequency: 100 times or over • Contact resistance:10mΩ or less
- Insertion / removal forces: 30g or over (per pin)
- Adaptive male pin diameter: φ 0.35 to φ 0.47
- Printed board fitting hole diameter: φ 0.9 to φ 1.0



Part number:MEW-2-1

How to order:

MEW-2-1-10PW

↑ Please fill in the number of poles on one side.(Maximum number: 30PW)
(If the number is not specified, we will deliver the part of the maximum number of connection.)