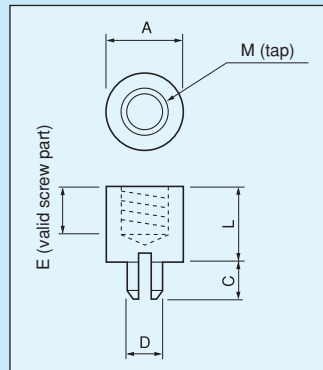
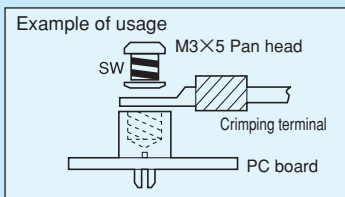


Terminal for fitting crimping terminal [PB series] (1000pcs/pack)

- This crimping terminal is used for supplying power supply line to a mother board, etc.
- Use of this product is limited to through hole boards.
- Please set the land diameter of ϕ 7 or over for PB-1 and PB-2, and ϕ 8 or over for PB-3 and PB-4. Also, please ensure that the solder is lifted to the part face. (Tightening torque: 6kg.f.cm or less)
- Material: Brass
- Finish G:Gold plating over nickel base
S:Tin plating over nickel base
- Rated current: 30A

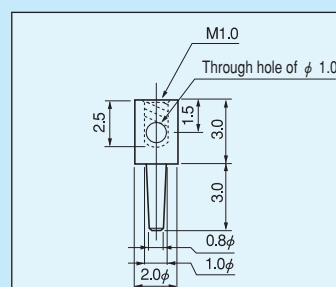
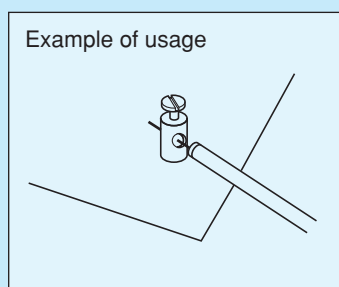
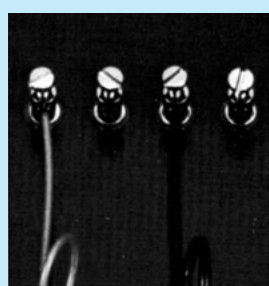
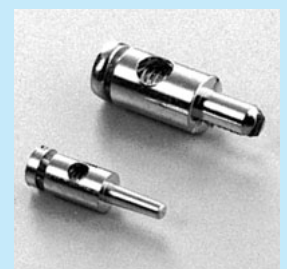


Part number	Plating	A (ϕ)	L	C	D (ϕ)	E	M (tap)	Printed board fitting hole (ϕ)	Printed board land diameter (ϕ)	Printed board thickness
PB-1-G	Gold	6	6	3.3	2.02	3.5	M3	2.0~2.1	7	1.6, 2.0
PB-1-S	Tin	6	6	3.3	2.02	3.5	M3	2.0~2.1	7	1.6, 2.0
PB-2-G	Gold	6	6.5	5	3.02	3.5	M3	3.0~3.1	7	3.2
PB-2-S	Tin	6	6.5	5	3.02	3.5	M3	3.0~3.1	7	3.2
PB-3-G	Gold	7	8	3.3	3.02	5	M4	3.0~3.1	8	1.6, 2.0
PB-3-S	Tin	7	8	3.3	3.02	5	M4	3.0~3.1	8	1.6, 2.0
PB-4-G	Gold	7	8	5	3.02	5	M4	3.0~3.1	8	3.2
PB-4-S	Tin	7	8	5	3.02	5	M4	3.0~3.1	8	3.2

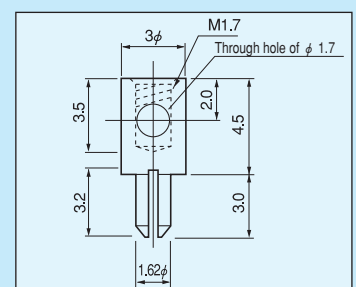
■ Please use □PB series for the type with different height.

Small terminal for electric wire installation [MM series] (100pcs/pack)

- This is used for fitting or removing a thin wire to a PC board.
- When fitting a small number of wires to a PC board, this product can be fit to any place and this makes pattern design very easy.
- Material: Brass
- Finish: Gold plating over nickel base
- Rated current: MM-1-1:10A
: MM-2-1:20A
- Screw: M1.0 pan head (-) nickel plating (MM-1-1)
: M1.7 pan head (+) nickel plating (MM-2-1)
- Printed board fitting hole diameter: ϕ 1.0(MM-1-1)
: ϕ 1.6(MM-2-1)
- Diameter of electric wire that can be fit: ϕ 0.8 or less (MM-1-1)
: ϕ 1.5 or less (MM-2-1)
- Screw is included.



Part number: MM-1-1



Part number: MM-2-1

For fitting crimping terminal