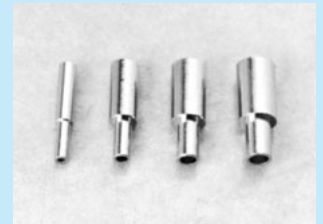


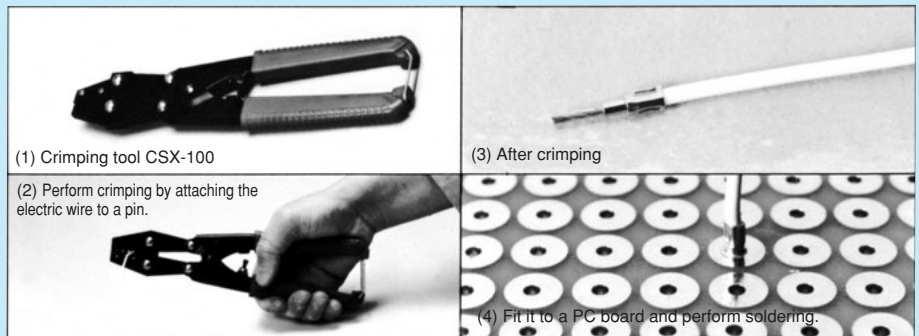
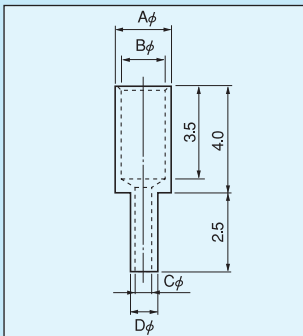
**Pin for reinforcing electric wire [CS series] (1000pcs/pack)**

- This is used for fitting a thin electric wire to a printed board without breakage of electric wire.
- Material: Brass
- Finish: Gold plating over nickel base
- Adaptive crimping tool: CSX-100



Part number	A	B	C	D	Diameter of electric wire that can be fit	Printed board fitting hole diameter
CS-1-1	1.15	0.75	0.5	0.9	AWG32	$\phi$ 1.0
CS-2-1	1.8	1.4	0.7	1.1	30,28,26	$\phi$ 1.2
CS-3-1	2.2	1.8	1.0	1.4	24,22	$\phi$ 1.5
CS-4-1	2.4	2.0	1.2	1.6	20	$\phi$ 1.7

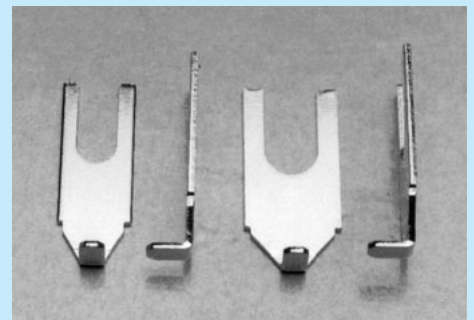
**How to use**



**Terminal for fitting terminal block [MH series] (100pcs/pack)**

- This is used for fitting a PC board to a terminal block.
- Two types, for terminal block screw M3 and M4, are available.
- Material: Brass
- Finish: Nickel plating
- Rated current: 10A
- Printed board fitting hole diameter:  $\phi$  2.2

Part number	A	B	Terminal block screw
MH-1-1	3.2	5.8	For M3
MH-2-1	4.2	7.6	For M4



**How to use**

