

**Resin type screw [2M, 2.6M, 3M, 4M series] [Polyamide] (100pcs/pack)**

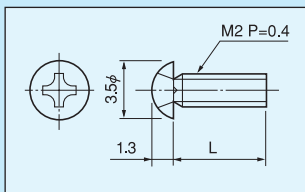
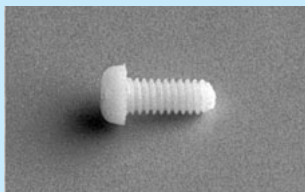
- This is a resin type screw.
- This is used when insulation is required.
- Material: Special polyamide resin (UL94HB)  
Natural color (ivory)
- Twist-cut torque: Screw:M2:1kgf-cm (9.8N-cm)  
M2.6:2kgf-cm (19.6N-cm)  
M3:3kgf-cm (29.4N-cm)  
M4:8kgf-cm (78.4N-cm)  
Nut:M2:1kgf-cm (9.8N-cm)  
M2.6:2kgf-cm (19.6N-cm)  
M3:4kgf-cm (39.2N-cm)  
M4:10kgf-cm (98N-cm)



(These values are for reference.)(Please use with 50% valve of the recommended tightening torque described above.)

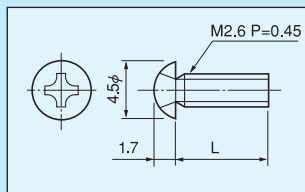
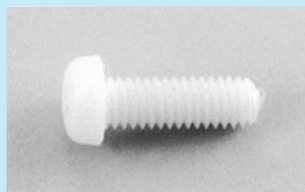
- Operating temperature range: -40 to +125°C

**■ 2M series (for M2)**



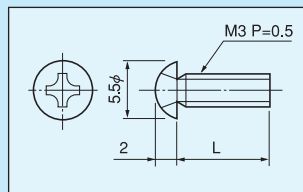
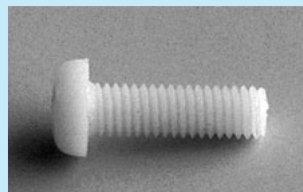
Part number	L (mm)
2M- 3	3
2M- 4	4
2M- 5	5
2M- 6	6
2M- 8	8
2M-10	10

**■ 2.6M series (for M2.6)**



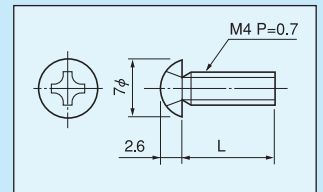
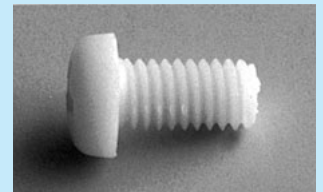
Part number	L (mm)
2.6M- 6	6
2.6M- 8	8
2.6M-10	10
2.6M-12	12

**■ 3M series (for M3)**



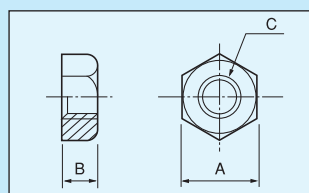
Part number	L (mm)
3M- 4	4
3M- 5	5
3M- 6	6
3M- 8	8
3M-10	10
3M-12	12
3M-16	16
3M-20	20

**■ 4M series (for M4)**



Part number	L (mm)
4M- 5	5
4M- 6	6
4M- 8	8
4M-10	10
4M-12	12
4M-16	16
4M-20	20
4M-25	25

**■ Nut**



Part number	A	B	C
2M-N	4	1.6	M2
2.6M-N	5	2.0	M2.6
3M-N	5.5	2.4	M3
4M-N	7	3.2	M4