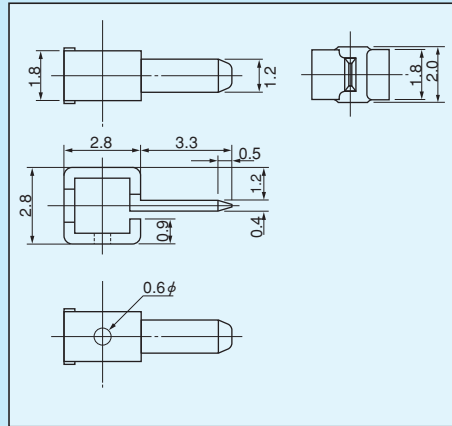


Parallel fitting pin for surface mounting [Part number: KO-2-1]

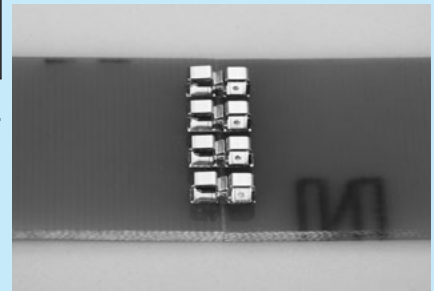
- This is a male pin for connecting PC boards in parallel.
- The following socket KC-2-1 is adaptive.
- Material: Phosphor bronze
- Finish: Gold plating over nickel base

■ Specification (when connecting KO-2-1 and KC-2-1)

- Rated current: 10A
- Contact resistance: 20mΩ or less
- Insertion / removal frequency: 100 times or less
- Operating temperature range: -40 to +125°C



■ Example of usage

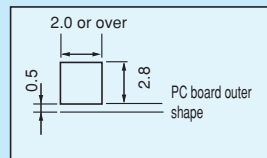


Combination of KO-2-1 and KC-2-1

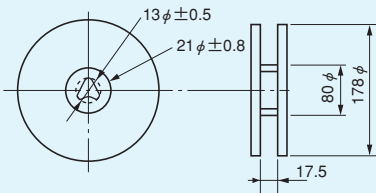
■ Part number

Part number	Package
KO-2-1	Bulk (1000pcs/pack)
KO-2-1-T	Reel (500pcs/reel)

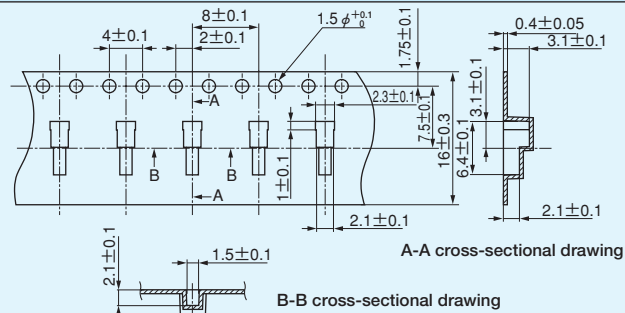
■ Recommended land diameter



Dimension of the reel



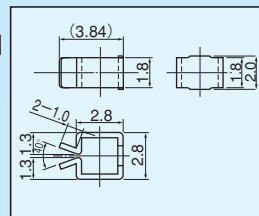
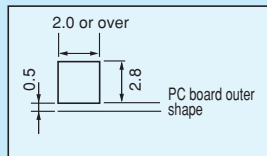
Dimension of the tape



Parallel fitting socket for surface mounting [Part number: KC-2-1]

- By combining with KO-2-1 described above, PC boards can be connected in parallel.
- Material: Phosphor bronze
- Finish: Gold plating over nickel base

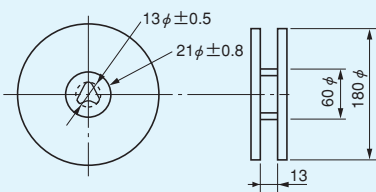
■ Recommended land diameter



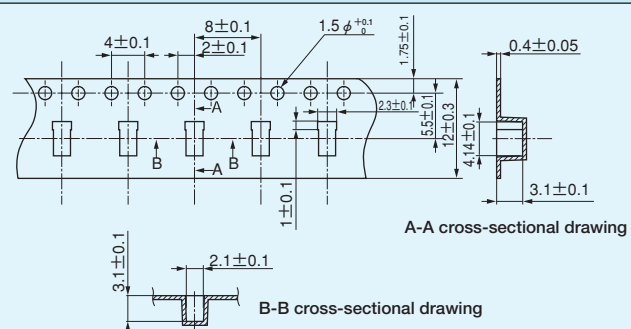
■ Part number

Part number	Package
KC-2-1	Bulk (1000pcs/pack)
KC-2-1-T	Reel (500pcs/reel)

Dimension of the reel



Dimension of the tape



For surface mounting