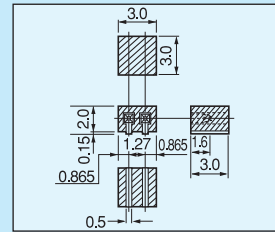
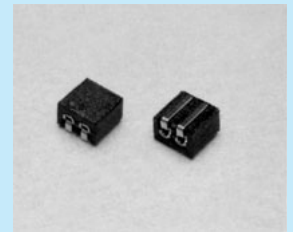


Jumper socket for surface mounting [HHP series]

- By combining HHP series with JHP-3, switching is available.
- By inserting JHP-3, it is turned on. By pulling it out, it is turned off.
- Material
 - Contact part: Beryllium copper
 - Resin part: PCT black (UL94V-0)
- Finish
 - Contact part: Gold plating over nickel base
- Reflow can be used for this type.
- Rated current: 1A
- Insulation resistance: 500MΩ or over
- Withstand voltage: 500V AC, DC per minute
- Contact resistance: 10mΩ or less
- Insertion / removal forces: 50g or over
- Insertion / removal frequency: 100 times or over
- Adaptive male pin diameter: ϕ 0.3
- Operating temperature range: -40 to $+125^{\circ}\text{C}$

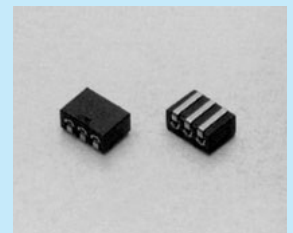
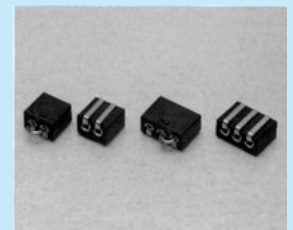
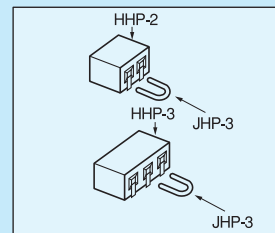


HHP-2

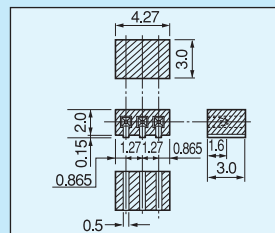


HHP-2

Example of usage



HHP-3



HHP-3

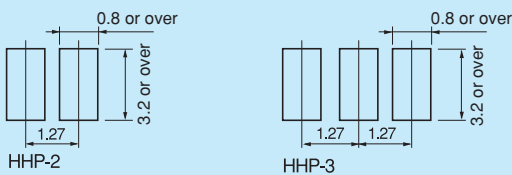
Part number

Part number	Package
HHP-2	Magazine (100pcs/pack)
HHP-2-T	Reel (700pcs/reel)
HHP-3	Magazine (100pcs/pack)
HHP-3-T	Reel (700pcs/reel)

Instructions for use

As the crimping strength between the contact part and the resin part is weak, please apply an adhesive to the both sides (PC board and resin) and use.

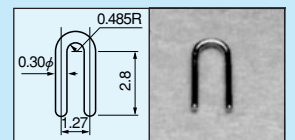
Recommended land diameter



Jumper [Part number: JHP-3] (100pcs/pack)

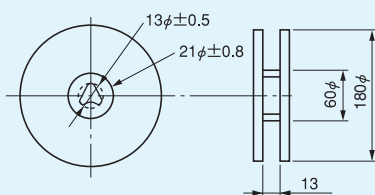
- This jumper is used for HHP-2 and HHP-3.
- Material: Phosphor bronze
- Finish: Gold plating over nickel base
- Rated current: 1A

Example of usage



Part number : JHP-3

Dimension of the reel



Dimension of the tape

