

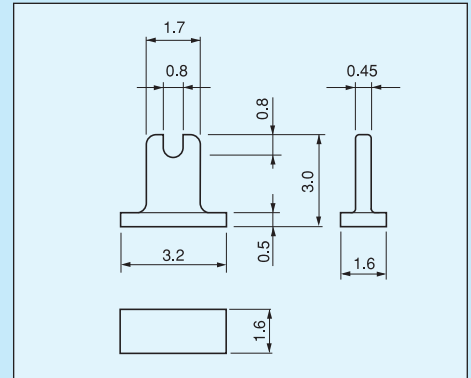
Adjustment part terminal for surface mounting [HM series] (1000pcs/pack)

- This is used for fitting a lead type adjustment resistor on a surface mounting board.
- Material: Brass
- Finish: Gold plating over nickel base, Tin plating over nickel base

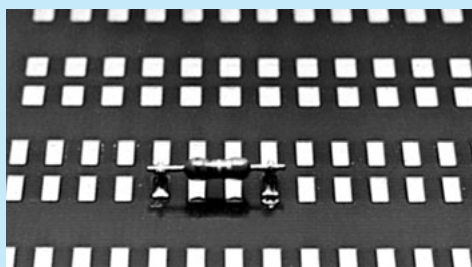
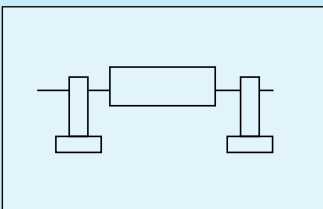
■ Part number:

- HM-1-G) Gold plating
- HM-10-G)
- HM-1-S) Tin plating
- HM-10-S)

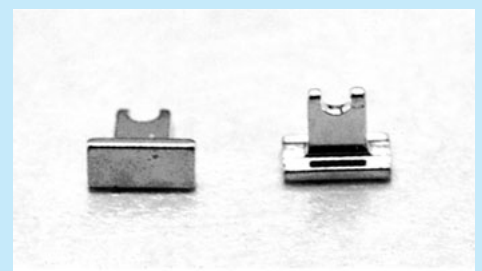
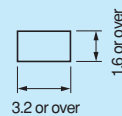
■ Dimension



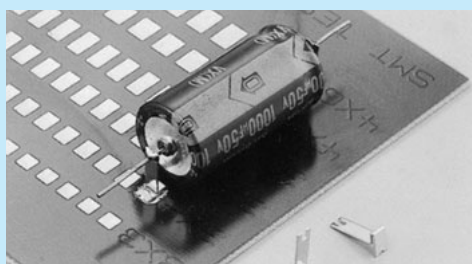
HM-1-G, HM-1-S



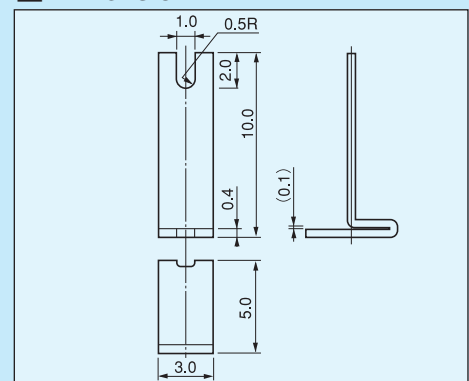
■ Recommended land diameter (HM-1-G, HM-1-S)



HM-1-G, HM-1-S

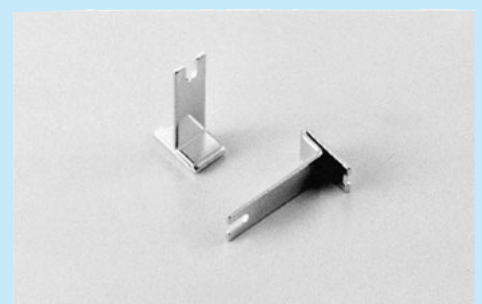
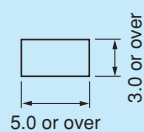


■ Dimension



HM-10-G, HM-10-S

■ Recommended land diameter (HM-10-G, HM-10-S)



HM-10-G, HM-10-S

For surface mounting