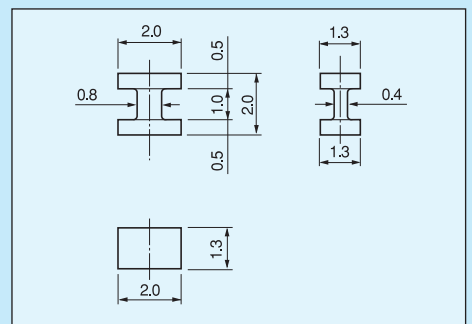
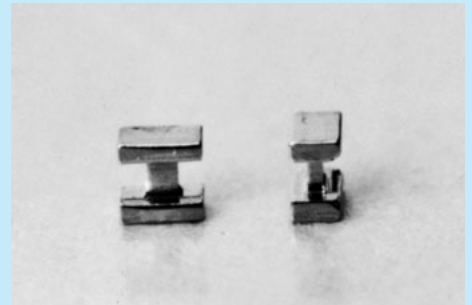


Test point for automatic inserting machine for surface mounting [HK-3 series] (2×1.25 type)

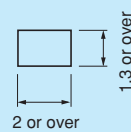
- A chip mounter can be used for this check terminal.
- This can be also used for pattern heat dissipation.
- With the size of 2×1.25, this is suitable for small devices.
- This is stored in an embossed tape.
- In the case of reflow with normal cream solder, the strength will be increased by using the land with a simple shape (□) and the size of 2×1.3 or over.
- Material: Brass
- Finish HK-3-G:Gold plating over nickel base
HK-3-S:Tin plating over nickel base

Part number	Package
HK-3-G-T	Reel (1500pcs/reel)
HK-3-G	Bulk (1000pcs/pack)
HK-3-S-T	Reel (1500pcs/reel)
HK-3-S	Bulk (1000pcs/pack)



HK-3-□-T(tape-and-reel)

Recommended land diameter



For surface mounting

