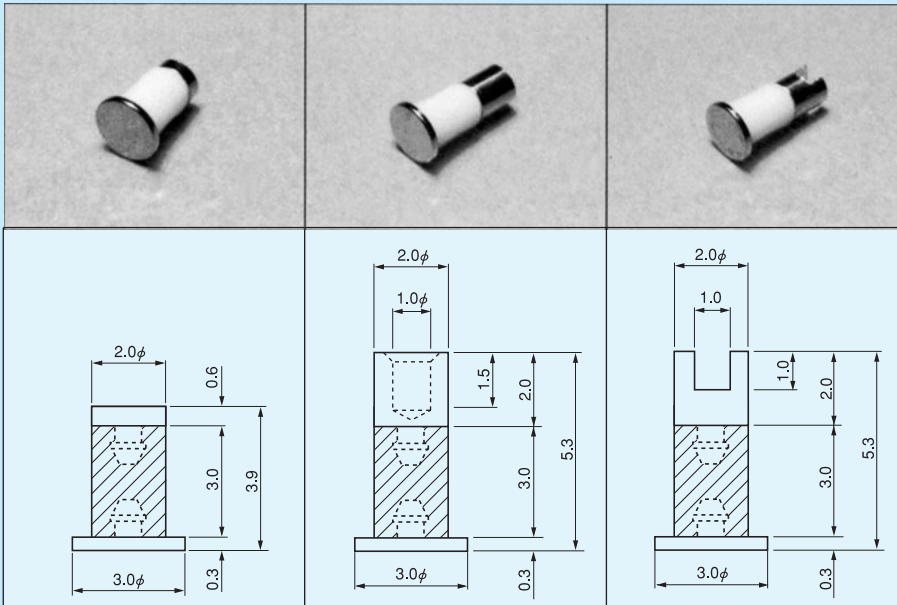
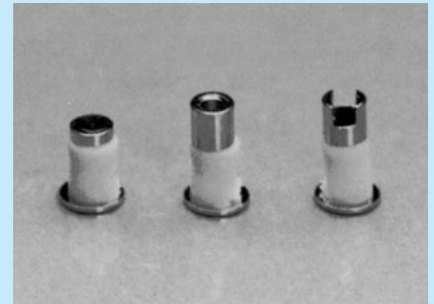


Fluorine terminal for surface mounting [FH series] (100pcs/pack)

- This product is used when performance is not fully achieved with a glass epoxy board at high-frequency circuit.
- The upper and lower pins are electrically insulated by fluorine.
- Material: Fluorine (milky white)(UL94-0)
: Brass
- Finish: Gold plating over nickel base
- Recommended fitting land diameter: ϕ 3.5



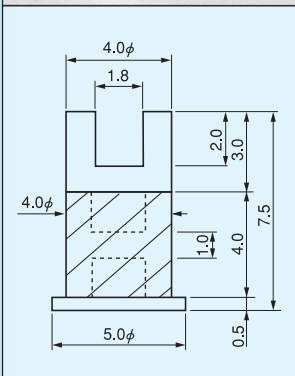
Part number: FH-1

Part number: FH-2

Part number: FH-3

Large type

The material and finish are the same as those described above.
Recommended fitting land diameter: ϕ 5.5



Part number: FH-30

For surface mounting